



Merchant Transport Utility

Installation et Utilisation

Version 1.0.9

Last update: 03-SEP-2009

Legal Disclaimer

Apache License
Version 2.0, January 2004
<http://www.apache.org/licenses/>

TERMS AND CONDITIONS FOR USE, REPRODUCTION, AND DISTRIBUTION

1. Definitions.

"License" shall mean the terms and conditions for use, reproduction, and distribution as defined by Sections 1 through 9 of this document.

"Licensor" shall mean the copyright owner or entity authorized by the copyright owner that is granting the License.

"Legal Entity" shall mean the union of the acting entity and all other entities that control, are controlled by, or are under common control with that entity. For the purposes of this definition, "control" means (i) the power, direct or indirect, to cause the direction or management of such entity, whether by contract or otherwise, or (ii) ownership of fifty percent (50%) or more of the outstanding shares, or (iii) beneficial ownership of such entity.

"You" (or "Your") shall mean an individual or Legal Entity exercising permissions granted by this License.

"Source" form shall mean the preferred form for making modifications, including but not limited to software source code, documentation source, and configuration files.

"Object" form shall mean any form resulting from mechanical transformation or translation of a Source form, including but not limited to compiled object code, generated documentation, and conversions to other media types.

"Work" shall mean the work of authorship, whether in Source or Object form, made available under the License, as indicated by a copyright notice that is included in or attached to the work (an example is provided in the Appendix below).

"Derivative Works" shall mean any work, whether in Source or Object form, that is based on (or derived from) the Work and for which the editorial revisions, annotations, elaborations, or other modifications represent, as a whole, an original work of authorship. For the purposes of this License, Derivative Works shall not include works that remain separable from, or merely link (or bind by name) to the interfaces of, the Work and Derivative Works thereof.

"Contribution" shall mean any work of authorship, including the original version of the Work and any modifications or additions to that Work or Derivative Works thereof, that is intentionally submitted to Licensor for inclusion in the Work by the copyright owner or by an individual or Legal Entity authorized to submit on behalf of the copyright owner. For the purposes of this definition, "submitted" means any form of electronic, verbal, or written communication sent to the Licensor or its representatives, including but not limited to communication on electronic mailing lists, source code control systems, and issue tracking systems that are managed by, or on behalf of, the Licensor for the purpose of discussing and improving the Work, but

excluding communication that is conspicuously marked or otherwise designated in writing by the copyright owner as "Not a Contribution."

"Contributor" shall mean Licensor and any individual or Legal Entity on behalf of whom a Contribution has been received by Licensor and subsequently incorporated within the Work.

2. Grant of Copyright License. Subject to the terms and conditions of this License, each Contributor hereby grants to You a perpetual, worldwide, non-exclusive, no-charge, royalty-free, irrevocable copyright license to reproduce, prepare Derivative Works of, publicly display, publicly perform, sublicense, and distribute the Work and such Derivative Works in Source or Object form.
3. Grant of Patent License. Subject to the terms and conditions of this License, each Contributor hereby grants to You a perpetual, worldwide, non-exclusive, no-charge, royalty-free, irrevocable (except as stated in this section) patent license to make, have made, use, offer to sell, sell, import, and otherwise transfer the Work, where such license applies only to those patent claims licensable by such Contributor that are necessarily infringed by their Contribution(s) alone or by combination of their Contribution(s) with the Work to which such Contribution(s) was submitted. If You institute patent litigation against any entity (including a cross-claim or counterclaim in a lawsuit) alleging that the Work or a Contribution incorporated within the Work constitutes direct or contributory patent infringement, then any patent licenses granted to You under this License for that Work shall terminate as of the date such litigation is filed.
4. Redistribution. You may reproduce and distribute copies of the Work or Derivative Works thereof in any medium, with or without modifications, and in Source or Object form, provided that You meet the following conditions:
 - (a) You must give any other recipients of the Work or Derivative Works a copy of this License; and
 - (b) You must cause any modified files to carry prominent notices stating that You changed the files; and
 - (c) You must retain, in the Source form of any Derivative Works that You distribute, all copyright, patent, trademark, and attribution notices from the Source form of the Work, excluding those notices that do not pertain to any part of the Derivative Works; and
 - (d) If the Work includes a "NOTICE" text file as part of its distribution, then any Derivative Works that You distribute must include a readable copy of the attribution notices contained within such NOTICE file, excluding those notices that do not pertain to any part of the Derivative Works, in at least one of the following places: within a NOTICE text file distributed as part of the Derivative Works; within the Source form or documentation, if provided along with the Derivative Works; or, within a display generated by the Derivative Works, if and wherever such third-party notices normally appear. The contents of the NOTICE file are for informational purposes only and do not modify the License. You may add Your own attribution notices within Derivative Works that You distribute, alongside or as an addendum to the NOTICE text from the Work, provided that such additional attribution notices cannot be construed as modifying the License.

You may add Your own copyright statement to Your modifications and may provide additional or different license terms and conditions for use, reproduction, or distribution of Your modifications, or for any such Derivative Works as a whole, provided Your use, reproduction, and distribution of the Work otherwise complies with the conditions stated in this License.

5. Submission of Contributions. Unless You explicitly state otherwise, any Contribution intentionally submitted for inclusion in the Work by You to the Licensor shall be under the terms and conditions of this License, without any additional terms or conditions. Notwithstanding the above, nothing herein shall supersede or modify the terms of any separate license agreement you may have executed with Licensor regarding such Contributions.
6. Trademarks. This License does not grant permission to use the trade names, trademarks, service marks, or product names of the Licensor, except as required for reasonable and customary use in describing the origin of the Work and reproducing the content of the NOTICE file.
7. Disclaimer of Warranty. Unless required by applicable law or agreed to in writing, Licensor provides the Work (and each Contributor provides its Contributions) on an "AS IS" BASIS, WITHOUT WARRANTIES OR CONDITIONS OF ANY KIND, either express or implied, including, without limitation, any warranties or conditions of TITLE, NON-INFRINGEMENT, MERCHANTABILITY, or FITNESS FOR A PARTICULAR PURPOSE. You are solely responsible for determining the appropriateness of using or redistributing the Work and assume any risks associated with Your exercise of permissions under this License.
8. Limitation of Liability. In no event and under no legal theory, whether in tort (including negligence), contract, or otherwise, unless required by applicable law (such as deliberate and grossly negligent acts) or agreed to in writing, shall any Contributor be liable to You for damages, including any direct, indirect, special, incidental, or consequential damages of any character arising as a result of this License or out of the use or inability to use the Work (including but not limited to damages for loss of goodwill, work stoppage, computer failure or malfunction, or any and all other commercial damages or losses), even if such Contributor has been advised of the possibility of such damages.
9. Accepting Warranty or Additional Liability. While redistributing the Work or Derivative Works thereof, You may choose to offer, and charge a fee for, acceptance of support, warranty, indemnity, or other liability obligations and/or rights consistent with this License. However, in accepting such obligations, You may act only on Your own behalf and on Your sole responsibility, not on behalf of any other Contributor, and only if You agree to indemnify, defend, and hold each Contributor harmless for any liability incurred by, or claims asserted against, such Contributor by reason of your accepting any such warranty or additional liability.

END OF TERMS AND CONDITIONS

APPENDIX: How to apply the Apache License to your work.

To apply the Apache License to your work, attach the following boilerplate notice, with the fields enclosed by brackets "[]" replaced with your own identifying information. (Don't include the brackets!) The text should be enclosed in the appropriate comment syntax for the file format. We also recommend that a

file or class name and description of purpose be included on the same "printed page" as the copyright notice for easier identification within third-party archives.

Copyright [yyyy] [name of copyright owner]

Licensed under the Apache License, Version 2.0 (the "License");
you may not use this file except in compliance with the License.
You may obtain a copy of the License at

<http://www.apache.org/licenses/LICENSE-2.0>

Unless required by applicable law or agreed to in writing, software
distributed under the License is distributed on an "AS IS" BASIS,
WITHOUT WARRANTIES OR CONDITIONS OF ANY KIND, either express or implied.

See the License for the specific language governing permissions and
limitations under the License.

Installation et Utilisation d'AMTU

1) Introduction:

AMTU (Amazon Transport Utility) est un petit outil pour télécharger des fichiers de ou vers les serveurs Amazon. AMTU est très facile à installer et utiliser. Vous avez seulement besoin de copier vos fichiers dans le bon répertoire. AMTU fait tous les opérations de téléchargement pour vous, et vous n'avez pas besoin de faire le développement vous-même.

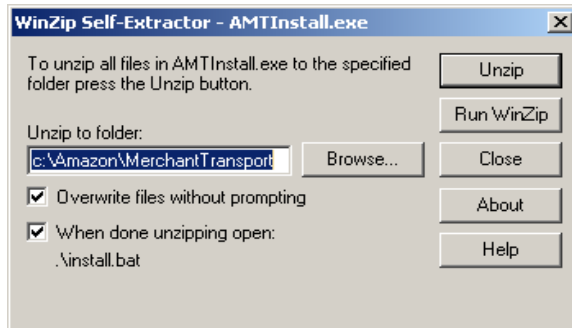
Quelques façons d'utilisation :

- Vous créez les fichiers produits/commandes (par exemple dans Excel) et vous les copiez manuellement vers AMTU.
- Vous créez automatiquement les fichiers et vous les transférez automatiquement vers AMTU. Les rapports de commandes sont automatiquement intégrés depuis AMTU dans vos systèmes.
- Vous utilisez AMTU simplement pour télécharger les rapports de commandes et vous les traitez manuellement.

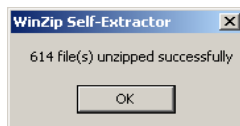
Note : AMTU accepte des fichiers TXT et XML.

2) Installation (pour Windows):

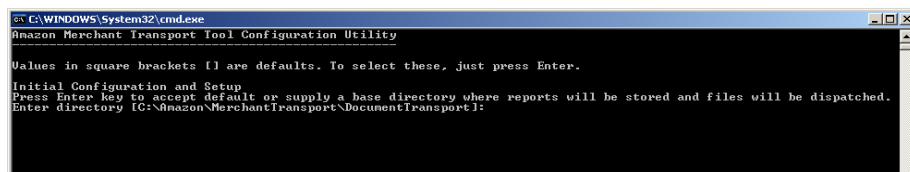
- 1) Vous devez avoir des droits administrateur sur l'ordinateur
- 2) Téléchargez la dernière version sur <http://amtu.sourceforge.net/>
- 3) Lancez le fichier que vous avez téléchargé **amtu-win32-x.x.x.exe**
- 4) Sélectionnez un répertoire et cliquez sur « Unzip »



- 5) Dès que les fichiers sont copiés, vous allez voir la fenêtre ci-dessous.
Cliquez « OK ».



- 6) Une fenêtre DOS va s'ouvrir automatiquement pour configurer AMTU et terminer l'installation.



- 6) Configuration (Explication en **bleu**)

Invoking Configure Utility
Amazon Merchant Transport Tool Configuration Utility v0.1

Values in square brackets [] are defaults. To select these, just press Enter.

Initial Configuration and Setup

Press Enter key to accept default or supply a base directory where reports will be stored and files will be dispatched.

Enter directory [C:\Amazon\MerchantTransport\DocumentTransport]:

→ **Entrez le répertoire pour l'installation.**

Choose what format you would prefer to receive your reports in

- 1) xml
- 2) text file

Enter choice [1]: 2

→ **Si les rapports que vous téléchargez sont dans le format XML indiquez « 1 » si les rapports sont sous forme TXT indiquez « 2 ». Il s'agit des rapports de commande et de paiements.**

Important 1 : Votre personne de contact chez Amazon doit aussi configurer le format de rapport pour votre compte.

Important 2 : Cette option n'est pas liée au format de fichier que vous chargez vers Amazon. Vous pouvez toujours charger des fichiers XML et TXT.

Enter an email address that will be used for application status notifications

[name@address.com]: test@amazon.lu

→ **Indiquez une adresse email interne pour recevoir des emails d'AMTU (état d'AMTU / lors d'erreurs ou de problèmes)**

Important : Seulement possible si vous avez un serveur SMTP

Enter the address of your smtp mail server (ask your mail administrator if you do not know what this is) [localhost]: pop3.freenet.de

→ **Indiquez le serveur SMTP**

Choose your Amazon SOAP Server location

- 1) US
- 2) EU
- 3) JP

Enter choice [1]: 2

→ **Indiquez « 2 » pour l'Europe**

Do you have a MIP (Merchant Integration Platform) account for testing? [No]: no

→ **Indiquez « No » (Seulement utilisé aux États-Unis)**

Do you have a Production account at this time? [No]: **yes**

→ **Indiquez « Yes »**

Editing account for Production

Enter merchant legal name []: Compte-Test

→ **Indiquez le nom de votre compte (celui que vous avez choisi lors de l'inscription sur SellerCentral – normalement le nom de votre entreprise)**

Enter your Amazon.com username for this account []:amazon@meinshop.de
→ **Indiquez l'adresse email que vous utilisez pour vous connecter à Sellercentral**

Enter your Amazon.com password for this account [*****]:
→ **Indiquez le mot de passe correspondant**

Enter your Amazon.com token (e.g. Q_M_MYNAME_1023) for this account []:
M_JORGSTESTM_51304
→ **Indiquez votre Token / Jeton vendeur que vous trouvez dans Sellercentral -> Paramètres -> Info sur le compte. Tout en bas vous trouvez « Votre Jeton Vendeur »**

Please standby while your account details are verified...

→ **Maintenant le programme contacte les serveurs Amazon pour vérifier les données indiquées. En cas d'erreur les problèmes suivants sont possibles :**

- **Vous ne possédez pas de droits d'administrateur**
- **Les données indiquées sont fausses**
- **Pas de connexion internet**

Ping was successful

→ **Vérification terminée et l'installation va continuer**

Updating configuration... done!

To alter this configuration, please use the Configuration Utility in the directory you installed this application.

Exiting Application.

Press any key to continue . . .

→ **Appuyez sur une touche pour continuer**

Installing AMT as Windows Service
wrapper : Amazon Merchant Transport installed.
Installing Monitor as Windows Service
wrapper : AMT Monitor installed.

Starting Monitor

The AMT Monitor service is starting.

The AMT Monitor service was started successfully.

Starting AMT

The Amazon Merchant Transport service is starting..

The Amazon Merchant Transport service was started successfully.

→ **Activation des services**

Press any key to continue . . .

→ Appuyez sur une touche pour terminer l'installation

```
c:\WINDOWS\System32\cmd.exe
Amazon Merchant Transport Tool Configuration Utility

Values in square brackets [] are defaults. To select these, just press Enter.

Initial Configuration and Setup
Press Enter key to accept default or supply a base directory where reports will be stored and files will be dispatched.
Enter directory [C:\Amazon\MerchantTransport\DocumentTransport1:
Directory does not exist. Would you like directory to be created? [Yes]:
Choose what format you would prefer to receive your reports in
  1) xml
  2) text file
Enter choice [1]: 2
Enter an email address that will be used for application status notifications [name@address.com]: test@test.com
Enter the address of your smtp mail server (ask your mail administrator if you do not know what this is) [localhost]:
Do you require a MIP (Merchant Integration Platform) account for testing? [No]:
Editing account for production
Enter merchant legal name []: Test
Enter your Amazon.com username for this account []: test@test.com
Enter your Amazon.com password for this account [*****]: test
Enter your Amazon.com token (e.g. Q_M_MYNAME_1023) for this account []: Q_TEST_1234
Please standby while your account details are verified...
Ping was successful
Updating configuration... done!

To alter this configuration, please use the Configuration Utility in the directory you installed this application.

Exiting Application
Press any key to continue . . .
Installing AMT as Windows Service.
wrapper ! Amazon Merchant Transport installed.
Installing Monitor as Windows Service.
wrapper ! AMT Monitor installed.
Starting Monitor
The AMT Monitor service is starting..
The AMT Monitor service was started successfully.

Starting AMT
The Amazon Merchant Transport service is starting..
The Amazon Merchant Transport service was started successfully.

Press any key to continue . . . _
```

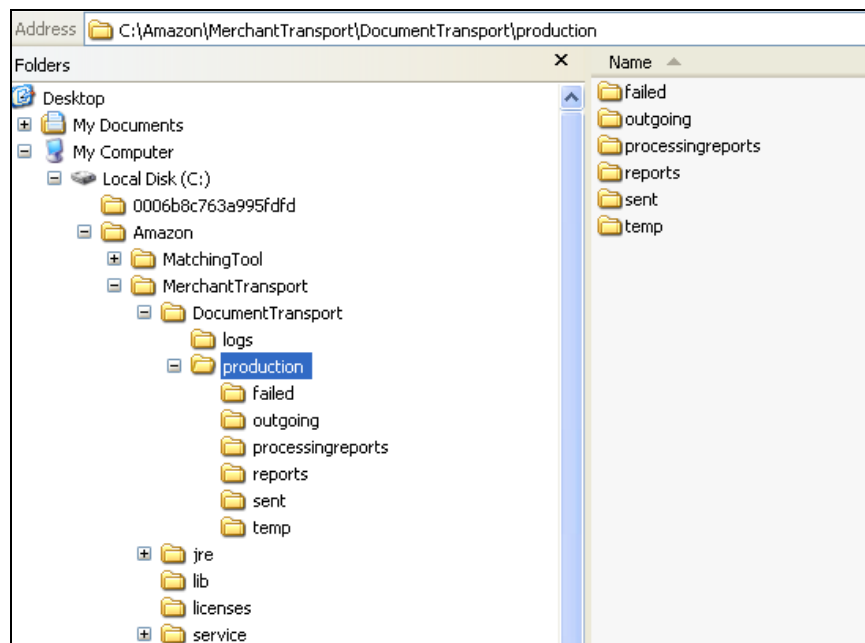
3) Utilisation d'AMTU

1) Explication

AMTU n'a pas d'interface graphique mais utilise deux services qui tournent sur votre machine. Ces services sont responsables pour transférer les fichiers de vous vers Amazon et vice versa.

Vous utilisez 6 répertoires pour envoyer et recevoir des fichiers.

2) Structure de répertoires



a. Failed

Contient tous les documents que'AMTU n'a pas pu télécharger vers Amazon

b. Outgoing

Ici, vous déposez tous les fichiers que vous voulez charger vers Amazon

c. Processingreports

Ce répertoire contient tous les rapports de traitements.

d. Reports

Contient les documents reçu d'Amazon (Rapports de commandes et rapports de paiement)

e. Sent

Dès qu'un fichier est transféré vers Amazon il sera automatiquement sauvegardé dans ce répertoire

f. Temp

Pendant le téléchargement le fichier sera temporairement mis dans le répertoire temp

3) Charger des fichiers vers Amazon

Le chargement est très facile.

- a. Copier le fichier (XML ou TXT) dans le répertoire « outgoing »

Important : L'extension doit être « .txt » ou « .xml »

- b. Toutes les 5 minutes AMTU télécharge les nouveaux fichiers vers Amazon

- c. Les fichiers sont copiés dans le répertoire « sent » avec un numéro d'identification ajouté à la fin. (Exemple :

Fichier.xml.1234567)

- d. Dès que le traitement chez Amazon est fini, le rapport sur celui-ci sera téléchargé dans le répertoire « processingreport ».

Le nom du fichier sera « PROCESSING » + le numéro d'identification. (Exemple : *PROCESSING1234567.xml*)

Vous devez vérifier qu'il contient ne contient pas d'erreur.

4) Téléchargement automatique de rapports

Les rapports de paiements et de commandes sont téléchargés dans le

répertoire « reports ».

AMTU regarde toutes les 15 minutes s'il existe un nouveau rapport de commande et toutes les 12 heures s'il existe un nouveau rapport de paiement.

Amazon doit configurer le format des rapports de commandes et de paiement (XML ou TXT).

Amazon doit aussi configurer la fréquence de création de rapport de commande (Chaque heure, tous les deux heures, 2 fois par jour)

Note 1: Au moment où nous écrivons ce document, il n'existe pas encore de version pour **Windows Vista**

Note 2: Il existe aussi des versions **Unix**. Vous devez avoir la version java j2re-1_4_2_11-linux-i586 <http://java.sun.com/j2se/1.4.2/download.html> .

Note 3 : Vous trouverez des informations complémentaires sur le forum suivant : http://sourceforge.net/forum/?group_id=118813

Note 4 : Toutes les opérations et problèmes d'AMTU sont accessibles dans les fichiers *log* dans le répertoire « logs »

Licenses

This is a list of third-party open-source applications and their respective licenses. All licenses may be found in the licenses directory with the exception of the Sun Java licenses which can be found in the JRE directory.

Apache (Axis, Commons, Log4J, Xerces)

```
/* =====
 * The Apache Software License, Version 1.1
 *
 * Copyright (c) 2002-2003 The Apache Software Foundation. All rights
 * reserved.
 *
 * Redistribution and use in source and binary forms, with or without
 * modification, are permitted provided that the following conditions
 * are met:
 *
 * 1. Redistributions of source code must retain the above copyright
 * notice, this list of conditions and the following disclaimer.
 *
 * 2. Redistributions in binary form must reproduce the above copyright
 * notice, this list of conditions and the following disclaimer in
 * the documentation and/or other materials provided with the
 * distribution.
 *
 * 3. The end-user documentation included with the redistribution, if
 * any, must include the following acknowledgement:
 * "This product includes software developed by the
 * Apache Software Foundation (http://www.apache.org/)."
 * Alternately, this acknowledgement may appear in the software itself,
 * if and wherever such third-party acknowledgements normally appear.
 *
 * 4. The names "The Jakarta Project", "Commons", and "Apache Software
 * Foundation" must not be used to endorse or promote products derived
 * from this software without prior written permission. For written
 * permission, please contact apache@apache.org.
 *
 * 5. Products derived from this software may not be called "Apache"
 * nor may "Apache" appear in their names without prior written
 * permission of the Apache Software Foundation.
 *
 * THIS SOFTWARE IS PROVIDED ``AS IS'' AND ANY EXPRESSED OR IMPLIED
 * WARRANTIES, INCLUDING, BUT NOT LIMITED TO, THE IMPLIED WARRANTIES
 * OF MERCHANTABILITY AND FITNESS FOR A PARTICULAR PURPOSE ARE
 * DISCLAIMED. IN NO EVENT SHALL THE APACHE SOFTWARE FOUNDATION OR
 * ITS CONTRIBUTORS BE LIABLE FOR ANY DIRECT, INDIRECT, INCIDENTAL,
 * SPECIAL, EXEMPLARY, OR CONSEQUENTIAL DAMAGES (INCLUDING, BUT NOT
 * LIMITED TO, PROCUREMENT OF SUBSTITUTE GOODS OR SERVICES; LOSS OF
 * USE, DATA, OR PROFITS; OR BUSINESS INTERRUPTION) HOWEVER CAUSED AND
 * ON ANY THEORY OF LIABILITY, WHETHER IN CONTRACT, STRICT LIABILITY,
 * OR TORT (INCLUDING NEGLIGENCE OR OTHERWISE) ARISING IN ANY WAY OUT
 * OF THE USE OF THIS SOFTWARE, EVEN IF ADVISED OF THE POSSIBILITY OF
 * SUCH DAMAGE.
 * =====
 *
 * This software consists of voluntary contributions made by many
 * individuals on behalf of the Apache Software Foundation. For more
 * information on the Apache Software Foundation, please see
 * <http://www.apache.org/>.
 */
```

```
/* =====
* The MX4J License, Version 1.0
*
* Copyright (c) 2001 MX4J. All rights reserved.
*
* Redistribution and use in source and binary forms, with or without
* modification, are permitted provided that the following conditions
* are met:
*
* 1. Redistributions of source code must retain the above copyright
* notice, this list of conditions and the following disclaimer.
*
* 2. Redistributions in binary form must reproduce the above copyright
* notice, this list of conditions and the following disclaimer in
* the documentation and/or other materials provided with the
* distribution.
*
* 3. The end-user documentation included with the redistribution,
* if any, must include the following acknowledgment:
* "This product includes software developed by the
* MX4J project (http://mx4j.sourceforge.net)."
* Alternately, this acknowledgment may appear in the software itself,
* if and wherever such third-party acknowledgments normally appear.
*
* 4. The names "MX4J" and "mx4j" must not be used to endorse or promote
* products derived from this software without prior written
* permission. For written permission, please contact
biorn_steedom@users.sourceforge.net
*
* 5. Products derived from this software may not be called "MX4J",
* nor may "MX4J" appear in their name, without prior written
* permission of Simone Bordet.
*
* THIS SOFTWARE IS PROVIDED ``AS IS'' AND ANY EXPRESSED OR IMPLIED
* WARRANTIES, INCLUDING, BUT NOT LIMITED TO, THE IMPLIED WARRANTIES
* OF MERCHANTABILITY AND FITNESS FOR A PARTICULAR PURPOSE ARE
* DISCLAIMED. IN NO EVENT SHALL CARLOS QUIROZ OR
* ITS CONTRIBUTORS BE LIABLE FOR ANY DIRECT, INDIRECT, INCIDENTAL,
* SPECIAL, EXEMPLARY, OR CONSEQUENTIAL DAMAGES (INCLUDING, BUT NOT
* LIMITED TO, PROCUREMENT OF SUBSTITUTE GOODS OR SERVICES; LOSS OF
* USE, DATA, OR PROFITS; OR BUSINESS INTERRUPTION) HOWEVER CAUSED AND
* ON ANY THEORY OF LIABILITY, WHETHER IN CONTRACT, STRICT LIABILITY,
* OR TORT (INCLUDING NEGLIGENCE OR OTHERWISE) ARISING IN ANY WAY OUT
* OF THE USE OF THIS SOFTWARE, EVEN IF ADVISED OF THE POSSIBILITY OF
* SUCH DAMAGE.
* =====
*
* This software consists of voluntary contributions made by many
* individuals on behalf of MX4J. For more information on
* MX4J, please see
* <http://mx4j.sourceforge.net>.
*/
```

HSQLDB

COPYRIGHTS AND LICENSES

This product includes Hypersonic SQL.

ORIGINAL LICENSE (a.k.a. "hypersonic_lic.txt")

For content, code, and products originally developed by Thomas Mueller and the Hypersonic SQL Group:

Copyright (c) 1995-2000 by the Hypersonic SQL Group. All rights reserved.

Redistribution and use in source and binary forms, with or without modification, are permitted provided that the following conditions are met:

- Redistributions of source code must retain the above copyright notice, this list of conditions and the following disclaimer.
- Redistributions in binary form must reproduce the above copyright notice, this list of conditions and the following disclaimer in the documentation and/or other materials provided with the distribution.
- All advertising materials mentioning features or use of this software must display the following acknowledgment: "This product includes Hypersonic SQL."
- Products derived from this software may not be called "Hypersonic SQL" nor may "Hypersonic SQL" appear in their names without prior written permission of the Hypersonic SQL Group.
- Redistributions of any form whatsoever must retain the following acknowledgment: "This product includes Hypersonic SQL."

This software is provided "as is" and any expressed or implied warranties, including, but not limited to, the implied warranties of merchantability and fitness for a particular purpose are disclaimed. In no event shall the Hypersonic SQL Group or its contributors be liable for any direct, indirect, incidental, special, exemplary, or consequential damages (including, but not limited to, procurement of substitute goods or services; loss of use, data, or profits; or business interruption). However caused any on any theory of liability, whether in contract, strict liability, or tort (including negligence or otherwise) arising in any way out of the use of this software, even if advised of the possibility of such damage.

This software consists of voluntary contributions made by many individuals on behalf of the Hypersonic SQL Group.

For work added by the HSQL Development Group (a.k.a. hsqldb_lic.txt):

For content, code, and products subsequently developed by the hsqldb Development Group:

Copyright (c) 2001-2002, The HSQL Development Group

All rights reserved.

Redistribution and use in source and binary forms, with or without modification, are permitted provided that the following conditions are met:

Redistributions of source code must retain the above copyright notice, this list of conditions and the following disclaimer, including earlier license statements (above) and comply with all above license conditions.

Redistributions in binary form must reproduce the above copyright notice, this list of conditions and the following disclaimer in the documentation and/or other materials provided with the distribution, including earlier license statements (above) and comply with all above license conditions.

Neither the name of the HSQL Development Group nor the names of its contributors may be used to endorse or promote products derived from this software without specific prior written permission.

THIS SOFTWARE IS PROVIDED BY THE COPYRIGHT HOLDERS AND CONTRIBUTORS "AS IS" AND ANY EXPRESS OR IMPLIED WARRANTIES, INCLUDING, BUT NOT LIMITED TO, THE IMPLIED WARRANTIES OF MERCHANTABILITY AND FITNESS FOR A PARTICULAR PURPOSE ARE DISCLAIMED. IN NO EVENT SHALL HSQL DEVELOPMENT GROUP, HSQLDB.ORG, OR CONTRIBUTORS BE LIABLE FOR ANY DIRECT, INDIRECT, INCIDENTAL, SPECIAL, EXEMPLARY, OR CONSEQUENTIAL DAMAGES (INCLUDING, BUT NOT LIMITED TO, PROCUREMENT OF SUBSTITUTE GOODS OR SERVICES; LOSS OF USE, DATA, OR PROFITS; OR BUSINESS INTERRUPTION) HOWEVER CAUSED AND ON ANY THEORY OF LIABILITY, WHETHER IN CONTRACT, STRICT LIABILITY, OR TORT (INCLUDING NEGLIGENCE OR OTHERWISE) ARISING IN ANY WAY OUT OF THE USE OF THIS SOFTWARE, EVEN IF ADVISED OF THE POSSIBILITY OF SUCH DAMAGE.

Tanuki Java Service Wrapper

Copyright (c) 1999, 2004 Tanuki Software

Permission is hereby granted, free of charge, to any person obtaining a copy of the Java Service Wrapper and associated documentation files (the "Software"), to deal in the Software without restriction, including without limitation the rights to use, copy, modify, merge, publish, distribute, sub-license, and/or sell copies of the Software, and to permit persons to whom the Software is furnished to do so, subject to the following conditions:

The above copyright notice and this permission notice shall be included in all copies or substantial portions of the Software.

THE SOFTWARE IS PROVIDED "AS IS", WITHOUT WARRANTY OF ANY KIND, EXPRESS OR IMPLIED, INCLUDING BUT NOT LIMITED TO THE WARRANTIES OF MERCHANTABILITY, FITNESS FOR A PARTICULAR PURPOSE AND NON-INFRINGEMENT. IN NO EVENT SHALL THE AUTHORS OR COPYRIGHT HOLDERS BE LIABLE FOR ANY CLAIM, DAMAGES OR OTHER LIABILITY, WHETHER IN AN ACTION OF CONTRACT, TORT OR OTHERWISE, ARISING FROM, OUT OF OR IN CONNECTION WITH THE SOFTWARE OR THE USE OR OTHER DEALINGS IN THE SOFTWARE.

Portions of the Software have been derived from source code developed by Silver Egg Technology under the following license:

Copyright (c) 2001 Silver Egg Technology

Permission is hereby granted, free of charge, to any person obtaining a copy of this software and associated documentation files (the "Software"), to deal in the Software without restriction, including without limitation the rights to use, copy, modify, merge, publish, distribute, sub-license, and/or sell copies of the Software, and to permit persons to whom the Software is furnished to do so, subject to the following conditions:

The above copyright notice and this permission notice shall be included in all copies or substantial portions of the Software.