

DEVS-Suite Set-up Guide For Eclipse

CSE/ASU

January 26, 2009

This document provides a brief guide for setting up DEVS-Suite in Eclipse. Eclipse Platform used:
Version: 3.4.1 Build id: M20080911-1700

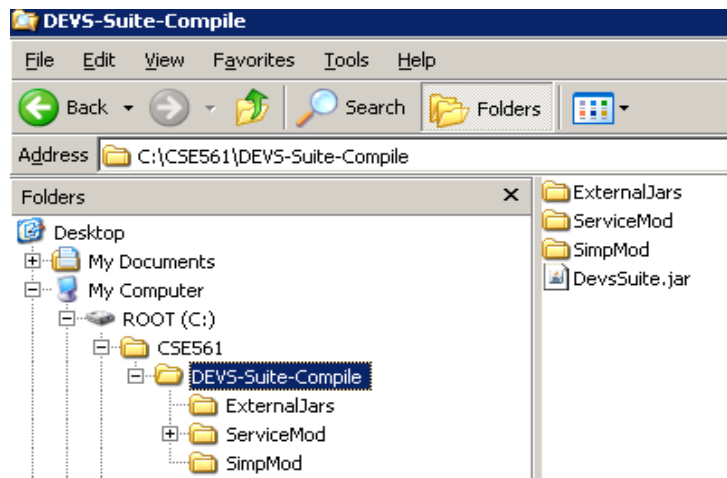
Note: Please follow the directory naming scheme and path names in the instruction step by step.

Required Downloads

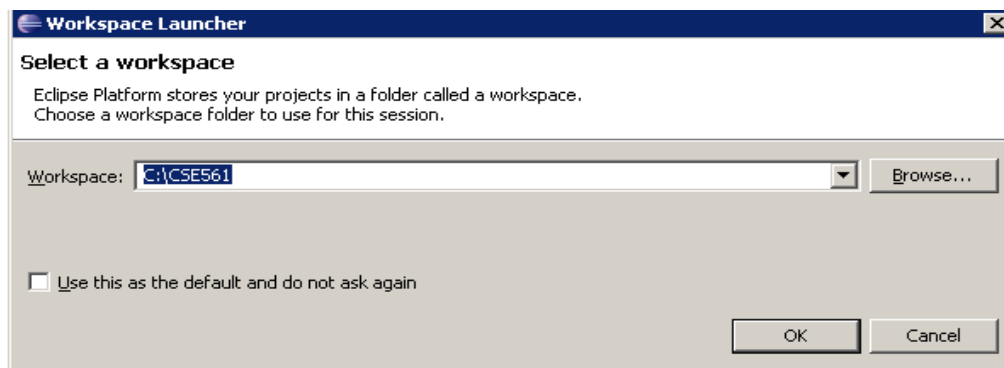
1. JDK version 6 update 7 from <http://java.sun.com/javase/downloads/>. Higher versions of JDK should also work.
2. Eclipse IDE for Java Developers (Ganymede, 85MB) from <http://www.eclipse.org/downloads/>
3. DEVS-Suite Simulator from <http://acims1.eas.asu.edu/WebStarts/DEVS-Suite/DEVS-Suite-Compile.zip> or <http://www.acims.arizona.edu/>.
4. You may need to download the utility WINZIP from http://www.winzip.com/prod_down.htm to decompress downloaded Zip files.

Pre-requisite Installs

1. Create a folder "C:\CSE561".
2. Unzip "DEVS-Suite-Compile.zip" to "C:\CSE561\DEVS-Suite-Compile".



3. Install JDK with default configurations.
4. Unzip Eclipse to a directory of your choice. For example: "C:\eclipse"
5. Verify that the Eclipse IDE executes by running "C:\eclipse\eclipse.exe". Select "C:\CSE561" as workspace directory when prompted.

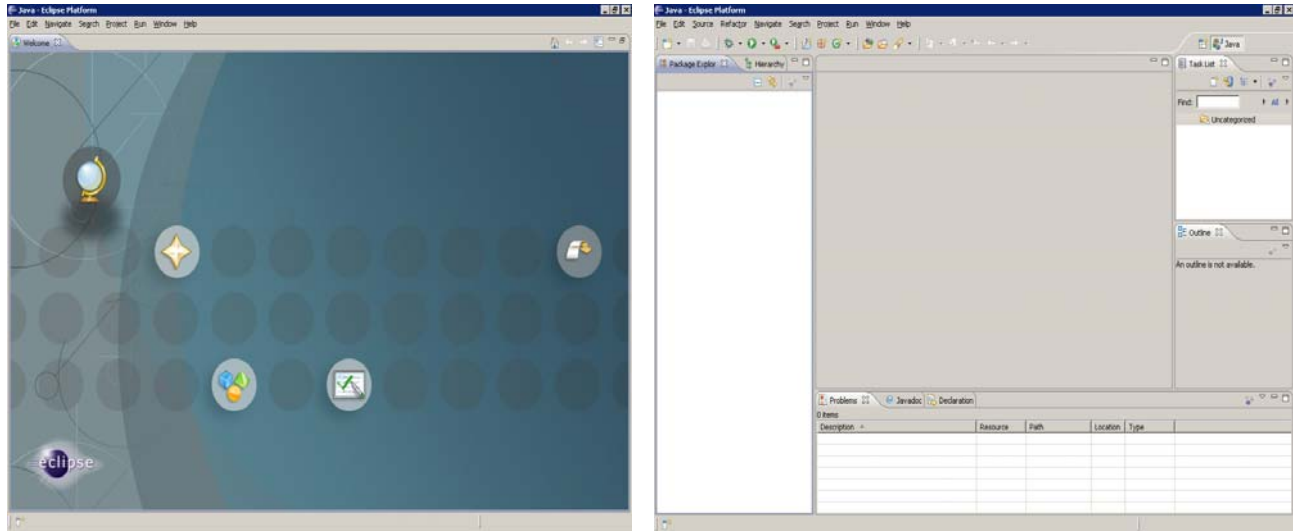


DEVS-Suite Set-up Guide For Eclipse

CSE/ASU

January 26, 2009

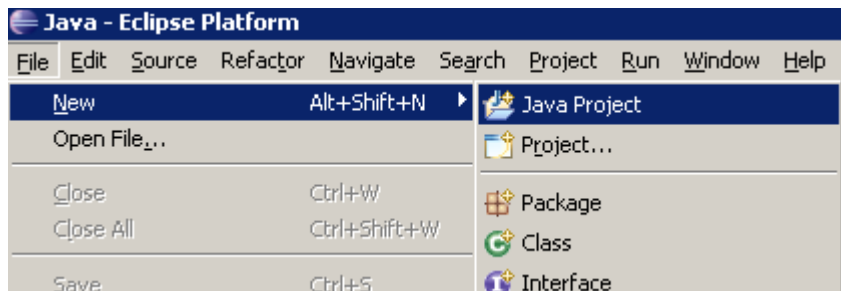
6. If everything is working properly you should get the Eclipse IDE running the welcome screen and if you close the welcome screen you should see the Java perspective.



7. If you are unable to execute eclipse verify that JDK is installed properly. If needed reinstall JDK and Eclipse. You may need to reboot your machine after each installation.

Configuring Eclipse to run DEVS-Suite

1. Select New Java Project from File menu.

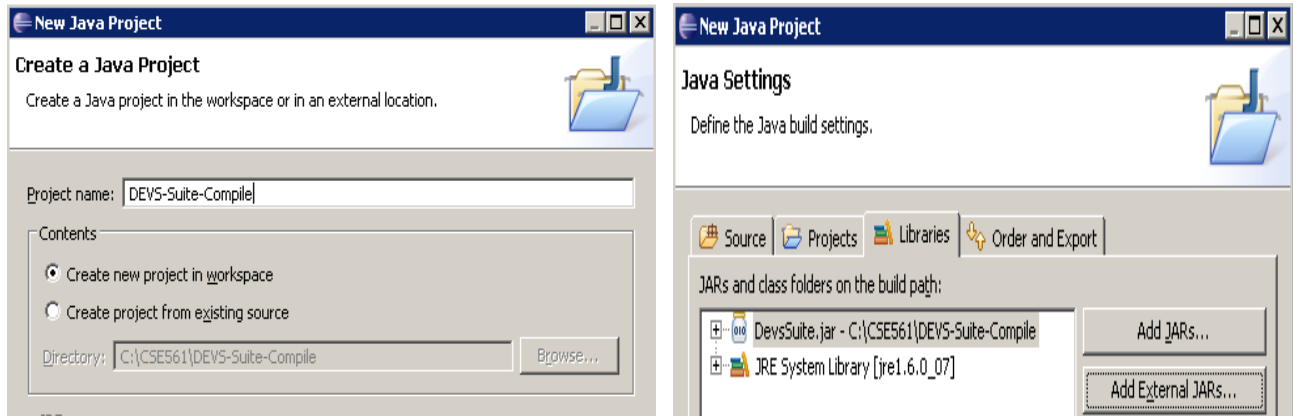


2. Create a project named "DEVS-Suite-Compile". Click Next. Select "Libraries" and then select "Add External Jars ". Select "C:\CSE561\DEVS-Suite-Compile\DEVS-Suite.jar" and it should be shown as in figure. Click "Finish".

DEVS-Suite Set-up Guide For Eclipse

CSE/ASU

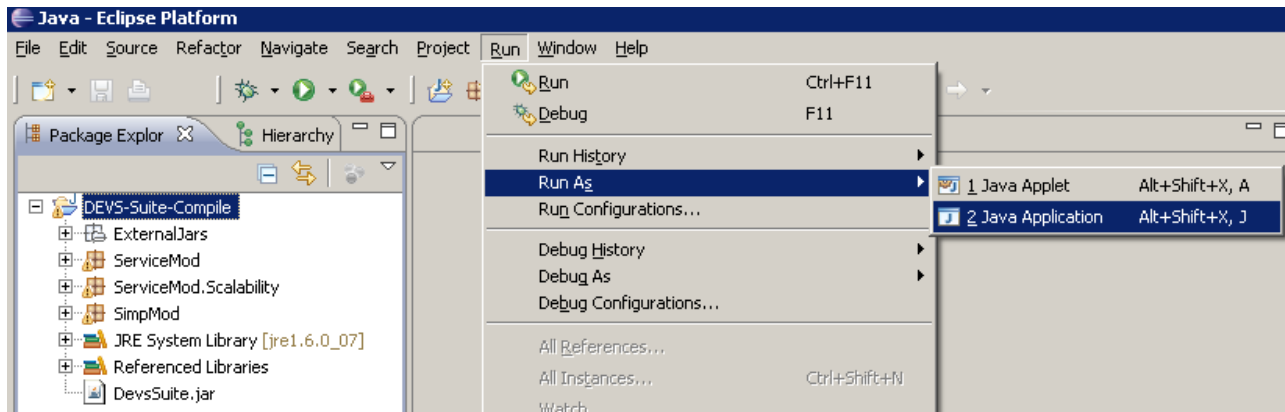
January 26, 2009



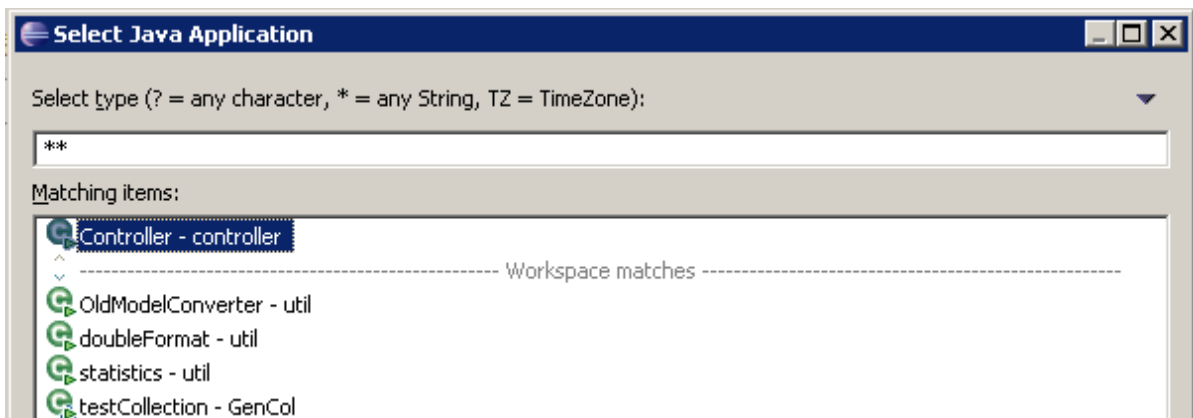
3. Eclipse is now configured to run DEVS-Suite

Running DEVS-Suite in Eclipse

1. Focus on "DEVS-Suite-Compile" and select Run as Java Application from file menu.



2. Select "Controller - controller" class then select OK.

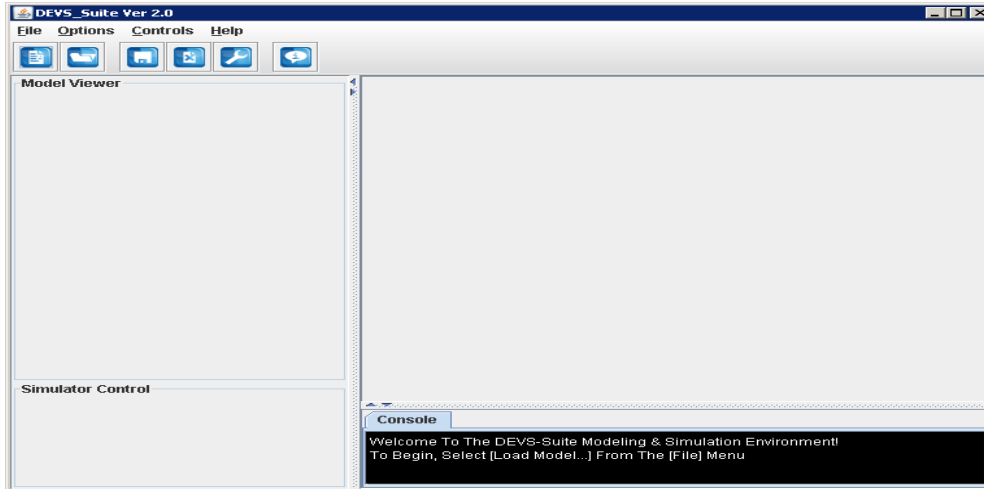


DEVS-Suite user interface will be running as in figure.

DEVS-Suite Set-up Guide For Eclipse

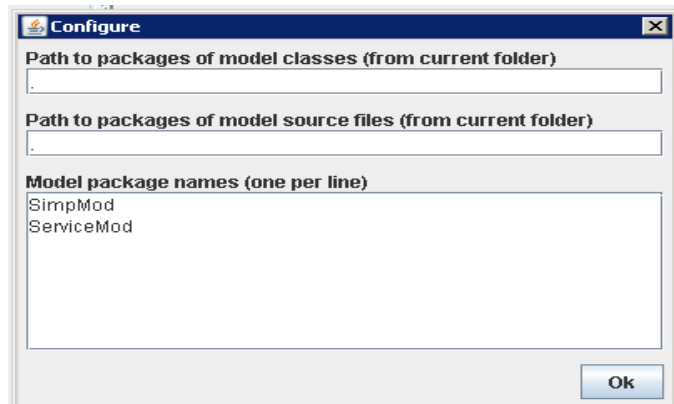
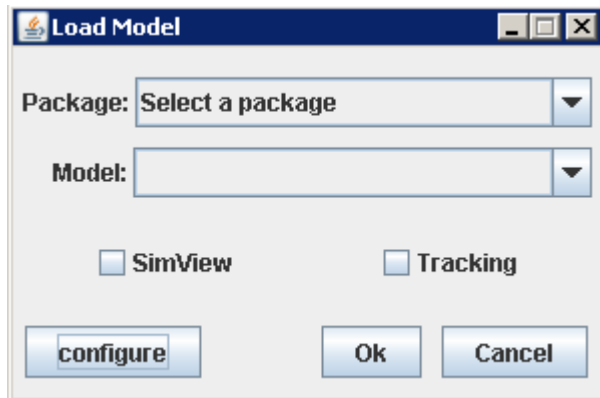
CSE/ASU

January 26, 2009

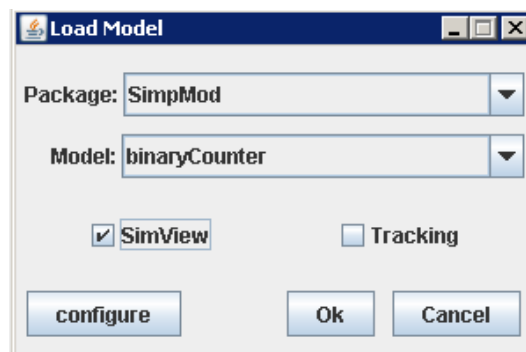


Simulating models in DEVS-Suite

1. Select "Load Model" from File Menu and then "configure". Add "SimpMod" and "ServiceMod" in the textbox as shown in figure. Click Ok.



2. Select a package (e.g. SimpMod) and a model (e.g. binaryCounter) of your choice. Select "SimView" and then press OK.

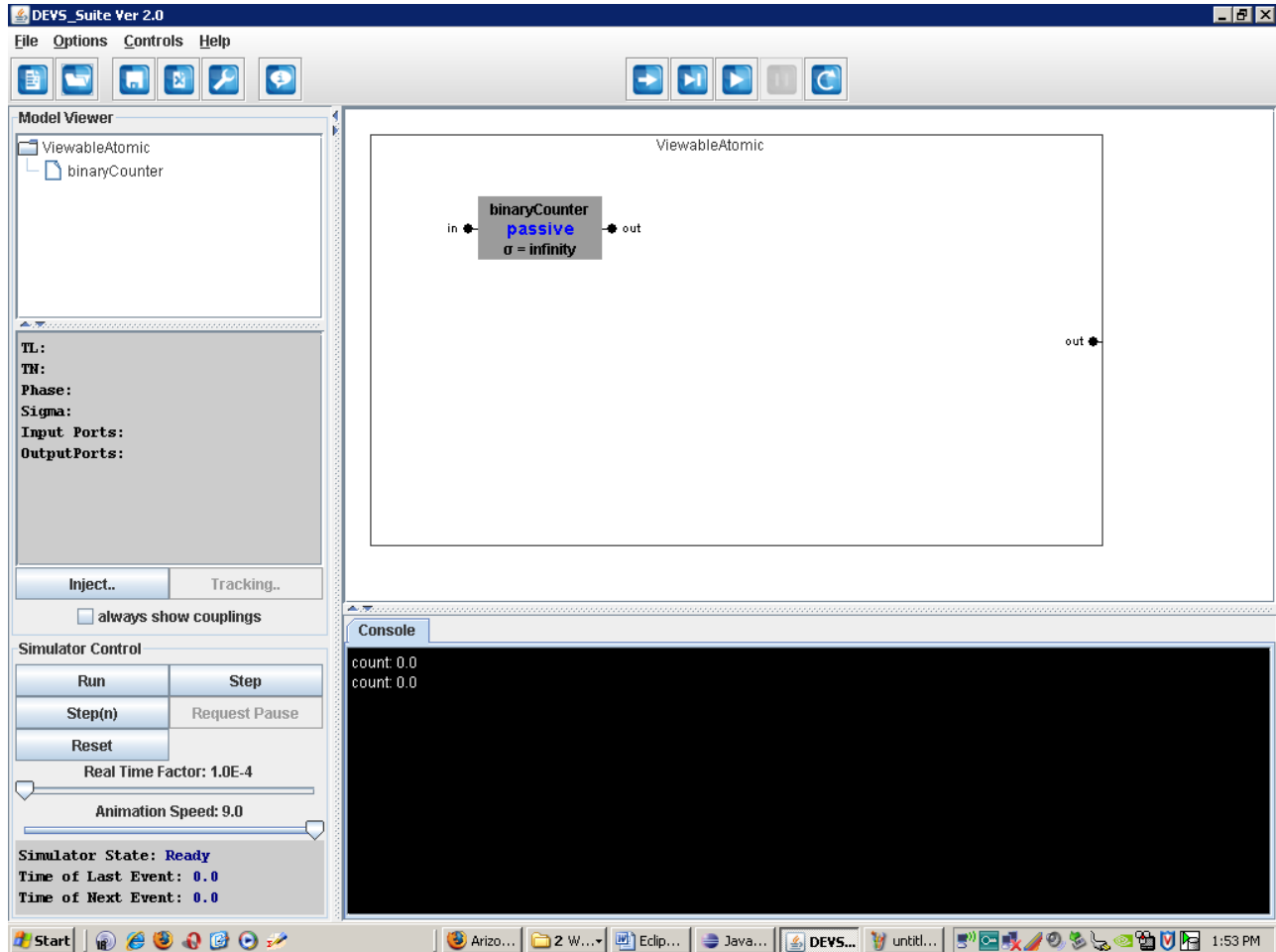


DEVS-Suite Set-up Guide For Eclipse

CSE/ASU

January 26, 2009

3. DEVS-Suite should be ready to run the model.



4. Select "Run" from command panel to simulate. [other details will be shown in class]

NOTE:

- You should configure the project for automatic build by checking "Build automatically" in the "Project" menu as shown in figure.

DEVS-Suite Set-up Guide For Eclipse

CSE/ASU

January 26, 2009

