

Chapter 2: Installation

The installation of **Workflow Magic** has got two parts:

- Install the application.
- Install the database.

Then, you must to configure the application to connect it to the database server.

The section 1 explains how install the application

The section 2 explains how update the backup of the database.

The section 3 is about the parameters of the files of configuration.

The section 4 gives advices about the configuration of the permissions

2.1. Install Workflow Magic

Look up the assistant of installation **instalar.exe**, in the CD of **Workflow Magic**



Execute that program. The assistant will guide you without problems.

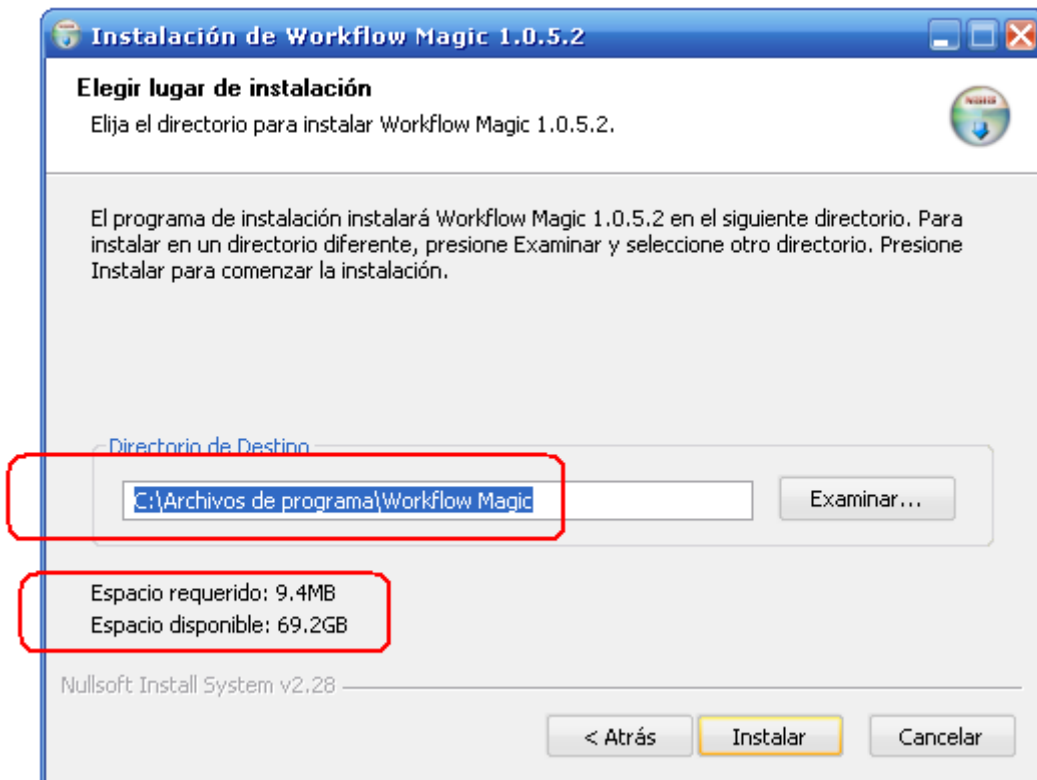


Illustration 11: Assistant to the installation

In the first step, you must pay attention to the installation path of the application, and the free space in the disk.

The others steps of the installation will be automatic.

2.2. Create an Initial database

The **Workflow Magic** version 1.x has only been testing for SQL Server database of Microsoft, so that version only has got the database backups to this type of servers.

If you know more about the functions available in the **Workflow Magic** version 1.x, you can consult the appendix 3 (State of the *Workflow Magic* Project).

Here, you can see the steps to install the initial database.

Step 1: Create a database in SQL Server Manager.

Enter to the Enterprise Manager of SQL Server, and there, create a new database, you can see an example in the picture 12,

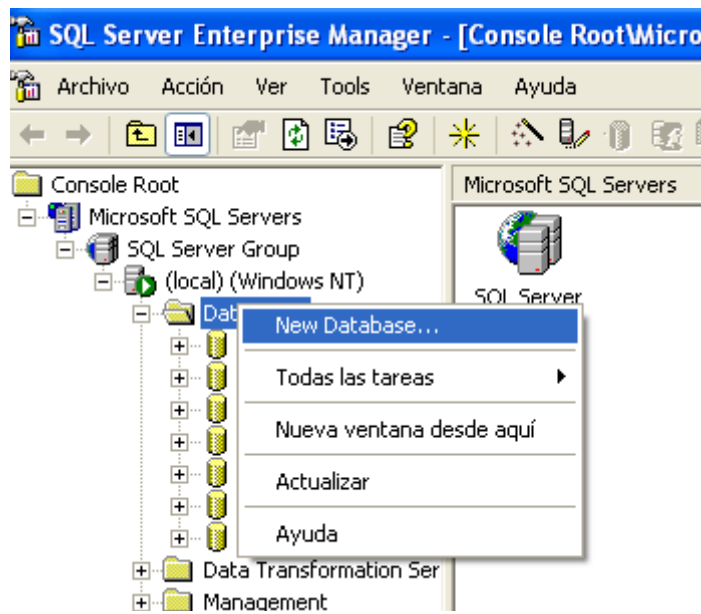


Illustration 12: Create a new database

The new database will be called **wfm**, as you can see in the picture 13.

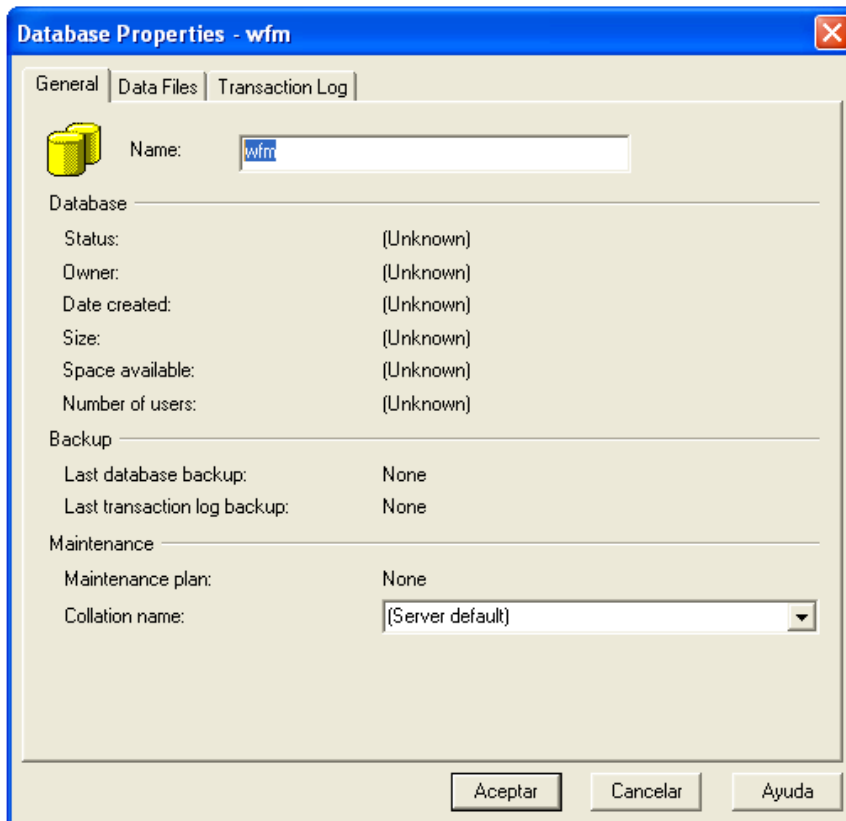


Illustration 13: Assign the name wfm to the new database

Accept.

Step 2: Stop the server.

If you want to update the backup of the database, you should stop the service of SQL Server, as it is shown in the picture 3.

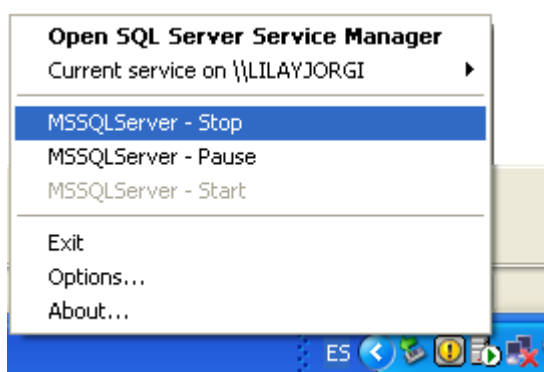


Illustration 14: Stop the service of de SQL Server

Step 3: Copy the backup to the directory specified.

In the directory where was installed Workflow Magic (\$WFM) go to path:

\$WFM\data\mssql\200701_2149_1.0.5.2

Inside of this directory you will find the files **wfm_data.mdf** y **wfm_log.ldf**. Both of them must replace to the files are stored in the directory of SQL Server (\$MSSQL).

\$MSSQL\Data

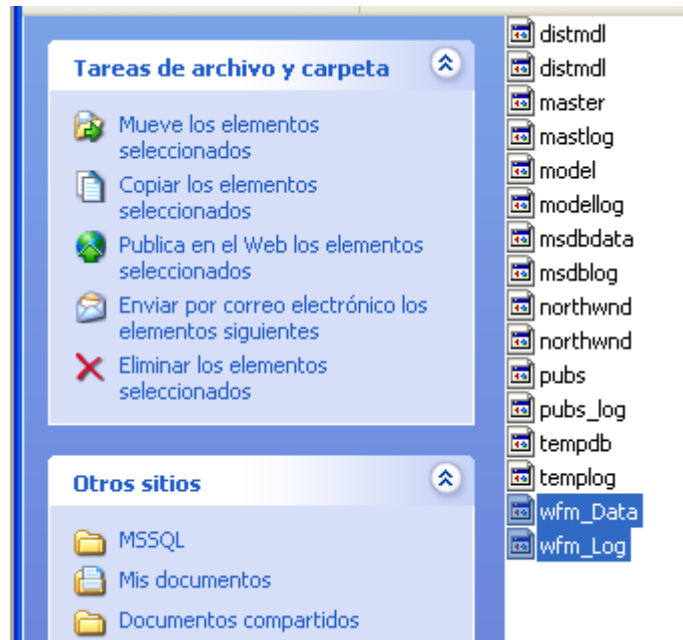


Illustration 15: Copy the backup of the database

Important: Pay attention the files **wfm_data.mdf** and **wfm_log.ldf** must not be in the mode read-only and they must have the read / write permission to the user where the server is execute.

Step 4: Configure the Workflow Magic connection.

Locate the file:

\$WFM\includes\init.vbs

Modify the constants which are shown in the figure,



Illustration 16: Connection Parameters to the database

The first step is the connection line to the database. The second is the connection line to the data dictionary. To the version 1.x is recommended to keep those constants in the same form.

Important: The parameters **Uid** and **Pwd** Must not specify if SQL Server only use Windows authentication.

Step 5: Start SQL Server.

Start the SQL Server service as it is shown in the Picture 17.

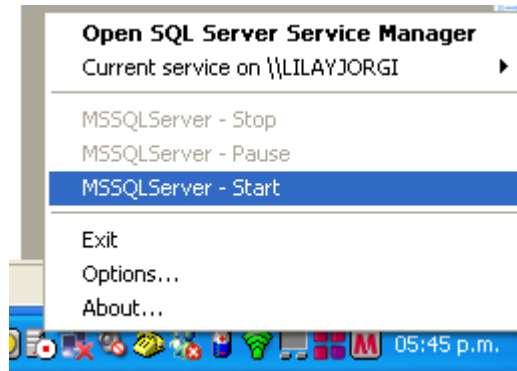


Illustration 17: Connection parameters to the database

2.3. Configure the application.

When the application and the database are installed, they must be connected. Moreover, you must specify some parameters.

The connection parameters are belonged to the configuration of the persistent layer. The parameters concerning to the user interface belong to the kernel configuration, who's containing the **Workflow Magic User Interface**.

Kernel Configuration.

All the parameters refer to the application view.exe are configured in the file:

\$WFM\conf\wfm_view.ini

The following parameters are very important:

Date_Format

The value USA will do that the application takes the dates with format: mm/dd/yyyy and the dot (.) as decimal separation.

The value NO_USA do that the application takes the dates with format: dd/mm/yyyy ant the comma (,) as decimal separation.

From 1.0.7.1 version, this parameter is obsolete. Today, the application take the user date format automatically.(view Issue)

Path

This parameters specify the root directory of the application (\$WFM). In the versions 1.x this value must take a slash (\) at the end.

This parameter is placed automatically by the installer, and you shouldn't modify it.

Default_File

Specify the file **init.vbs**. This script is the first file execute for the application. It defines connection constants and function which extend the possibilities of VBScript.

Main_File

Specify the file **main.vbs**. This script is immediately executed after the execution of **init.vbs**. It is part of the specify application which is being developed.

If there are more than one project in developing, may be, you have two configuration files available, each one specify your respective file main.

By default, Main_File parameter takes then **_sheduler project**, placed in \$WFM\Projects. This project shows a dialog for select one other project available in the projects folder.

Note: for the parameters Path, Default_File y Main_File, the installation assistant assign automatically the directory where **Workflow Magic** was installed.

Persistence Layer Configuration.

The connective parameters are configured in:

```
$WFM\includes\init.vbs
```

The section 2.2 (*Step 4: Configure the connective of Workflow Magic*) explain how configure these parameters.

2.4. Permission of the operating system

Finally, you may need configure permission from users to \$WFM folders.

There are two different sort of user. The **developers**, who will be entrusted of developing the system, and the final users, who will use the system already developed.

It is available that the final users only have execute permission and read permission on the **Workflow Magic** folder in the application server.

The developers, should have the same permission that the final users and write permission, because they will modify the source code which are in this folder.

Chapter 4: Implementing Business Rules

We will explain this chapter with a simple and full example.

Let's assume that the company **STECNA Co.** (*Technical Support*) wish to implement **Workflow Magic** to their circuit of *Repair of equipments*.

The part of Workflow of the company:

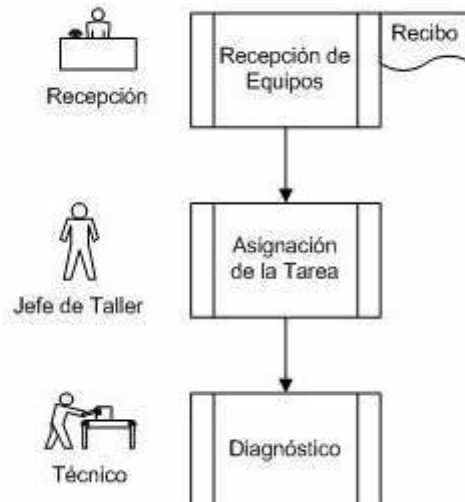


Illustration 30: Workflow of STECNA S.A.

The recognition show this information:

- The reception is done by a receptionist, who should issue a receipt to the client with the information of the details on the equipment to repair.
- The reception of equipment will generate automatically a assignment application to the head of workshop. In this point the head of workshop must select a technical expert to make this job.
- When the job is assigning to a technical expert, he must diagnose the fail/es, must estimate the work's hours and calculate the kind of materials necessary to do the repairs.
- It is very important that each technical expert only can visualize his works. Neither of technical experts must be able to watch nor modify the works assigned to other technical expert.

In this survey, we will implement the different steps of workflow, we will explain the form of implement the different rules of business.

Note: This example is implemented in the version 1.0.6.0 and in the following versions. The relational diagrams, configurations and source code of this version are in the application by default. You only must watch how they are doing.

Chapter 4: Implementing Business Rules

We will explain this chapter with a simple and full example.

Let's assume that the company **STECNA Co.** (*Technical Support*) wish to implement **Workflow Magic** to their circuit of *Repair of equipments*.

The part of Workflow of the company:

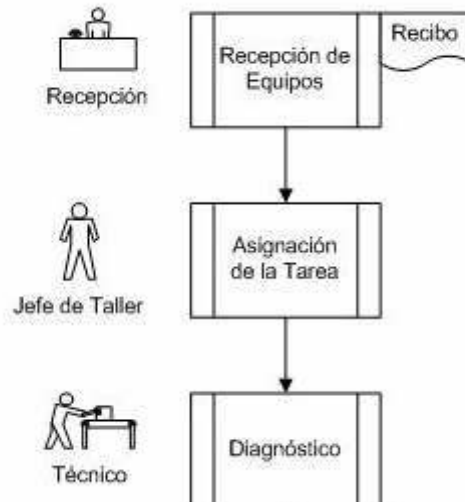


Illustration 30: Workflow of STECNA S.A.

The recognition show this information:

- The reception is done by a receptionist, who should issue a receipt to the client with the information of the details on the equipment to repair.
- The reception of equipment will generate automatically a assignment application to the head of workshop. In this point the head of workshop must select a technical expert to make this job.
- When the job is assigning to a technical expert, he must diagnose the fail/es, must estimate the work's hours and calculate the kind of materials necessary to do the repairs.
- It is very important that each technical expert only can visualize his works. Neither of technical experts must be able to watch nor modify the works assigned to other technical expert.

In this survey, we will implement the different steps of workflow, we will explain the form of implement the different rules of business.

Note: This example is implemented in the version 1.0.6.0 and in the following versions. The relational diagrams, configurations and source code of this version are in the application by default. You only must watch how they are doing.

Chapter 2: Installation

The installation of **Workflow Magic** has got two parts:

- Install the application.
- Install the database.

Then, you must to configure the application to connect it to the database server.

The section 1 explains how install the application

The section 2 explains how update the backup of the database.

The section 3 is about the parameters of the files of configuration.

The section 4 gives advices about the configuration of the permissions

2.1. Install Workflow Magic

Look up the assistant of installation **instalar.exe**, in the CD of **Workflow Magic**



Execute that program. The assistant will guide you without problems.

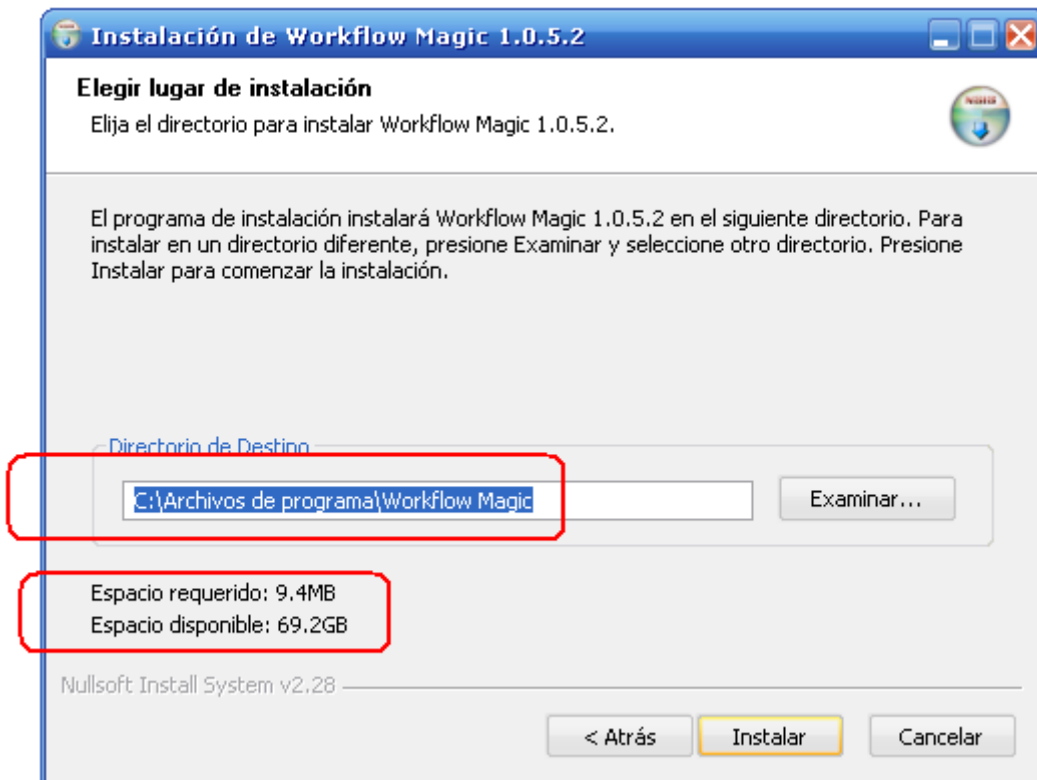


Illustration 11: Assistant to the installation

In the first step, you must pay attention to the installation path of the application, and the free space in the disk.

The others steps of the installation will be automatic.

2.2. Create an Initial database

The **Workflow Magic** version 1.x has only been testing for SQL Server database of Microsoft, so that version only has got the database backups to this type of servers.

If you know more about the functions available in the **Workflow Magic** version 1.x, you can consult the appendix 3 (State of the *Workflow Magic* Project).

Here, you can see the steps to install the initial database.

Step 1: Create a database in SQL Server Manager.

Enter to the Enterprise Manager of SQL Server, and there, create a new database, you can see an example in the picture 12,



Illustration 12: Create a new database

The new database will be called **wfm**, as you can see in the picture 13.

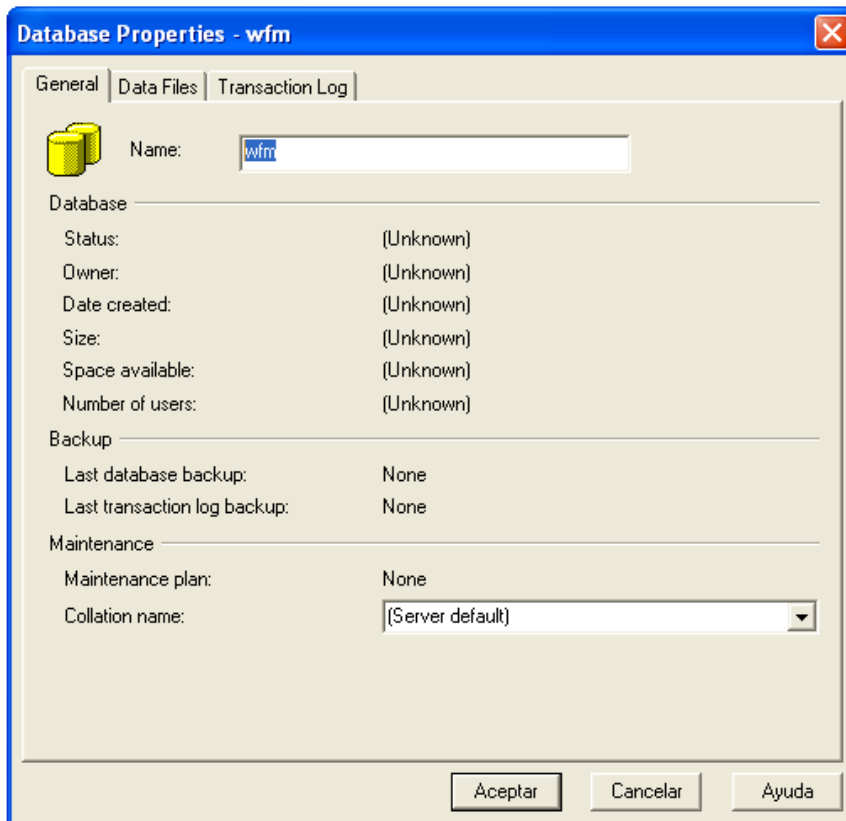


Illustration 13: Assign the name wfm to the new database

Accept.

Step 2: Stop the server.

If you want to update the backup of the database, you should stop the service of SQL Server, as it is shown in the picture 3.

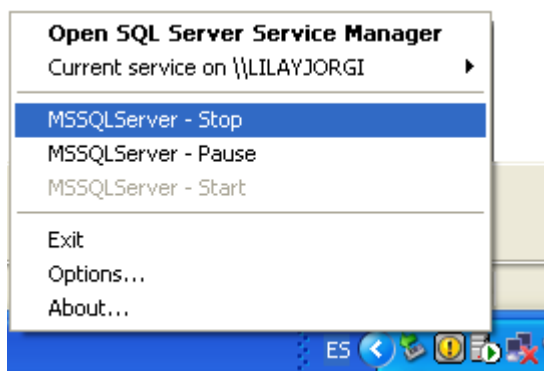


Illustration 14: Stop the service of de SQL Server

Step 3: Copy the backup to the directory specified.

In the directory where was installed Workflow Magic (\$WFM) go to path:

\$WFM\data\mssql\200701_2149_1.0.5.2

Inside of this directory you will find the files **wfm_data.mdf** y **wfm_log.ldf**. Both of them must replace to the files are stored in the directory of SQL Server (\$MSSQL).

\$MSSQL\Data

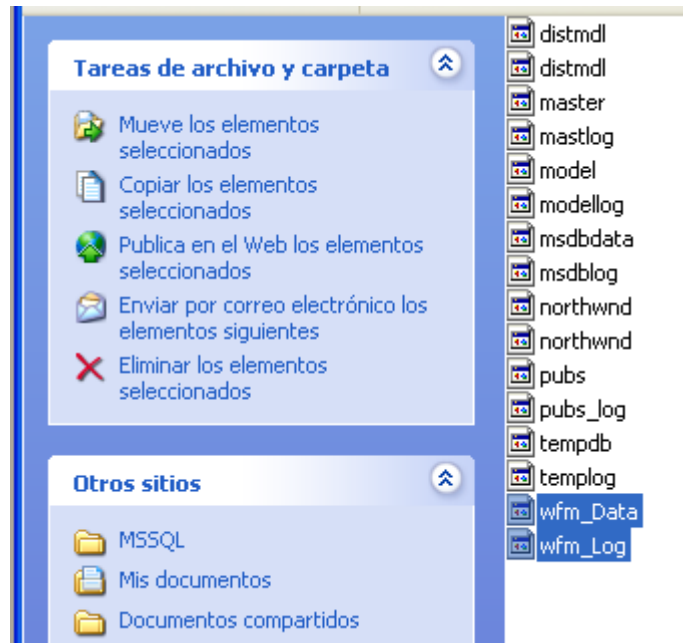


Illustration 15: Copy the backup of the database

Important: Pay attention the files **wfm_data.mdf** and **wfm_log.ldf** must not be in the mode read-only and they must have the read / write permission to the user where the server is execute.

Step 4: Configure the Workflow Magic connection.

Locate the file:

\$WFM\includes\init.vbs

Modify the constants which are shown in the figure,



Illustration 16: Connection Parameters to the database

The first step is the connection line to the database. The second is the connection line to the data dictionary. To the version 1.x is recommended to keep those constants in the same form.

Important: The parameters **Uid** and **Pwd** Must not specify if SQL Server only use Windows authentication.

Step 5: Start SQL Server.

Start the SQL Server service as it is shown in the Picture 17.

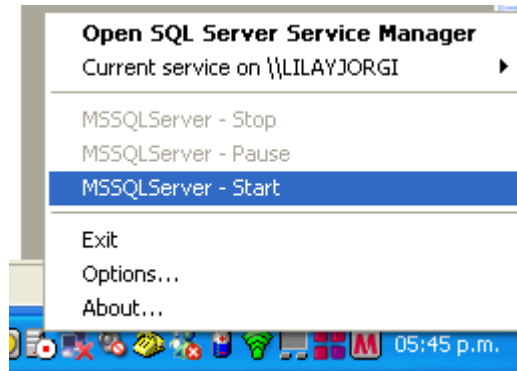


Illustration 17: Connection parameters to the database

2.3. Configure the application.

When the application and the database are installed, they must be connected. Moreover, you must specify some parameters.

The connection parameters are belonged to the configuration of the persistent layer. The parameters concerning to the user interface belong to the kernel configuration, who's containing the **Workflow Magic User Interface**.

Kernel Configuration.

All the parameters refer to the application view.exe are configured in the file:

\$WFM\conf\wfm_view.ini

The following parameters are very important:

Date_Format

The value USA will do that the application takes the dates with format: mm/dd/yyyy and the dot (.) as decimal separation.

The value NO_USA do that the application takes the dates with format: dd/mm/yyyy ant the comma (,) as decimal separation.

From 1.0.7.1 version, this parameter is obsolete. Today, the application take the user date format automatically.(view Issue)

Path

This parameters specify the root directory of the application (\$WFM). In the versions 1.x this value must take a slash (\) at the end.

This parameter is placed automatically by the installer, and you shouldn't modify it.

Default_File

Specify the file **init.vbs**. This script is the first file execute for the application. It defines connection constants and function which extend the possibilities of VBScript.

Main_File

Specify the file **main.vbs**. This script is immediately executed after the execution of **init.vbs**. It is part of the specify application which is being developed.

If there are more than one project in developing, may be, you have two configuration files available, each one specify your respective file main.

By default, Main_File parameter takes then **_sheduler project**, placed in \$WFM\Projects. This project shows a dialog for select one other project available in the projects folder.

Note: for the parameters Path, Default_File y Main_File, the installation assistant assign automatically the directory where **Workflow Magic** was installed.

Persistence Layer Configuration.

The connective parameters are configured in:

```
$WFM\includes\init.vbs
```

The section 2.2 (*Step 4: Configure the connective of Workflow Magic*) explain how configure these parameters.

2.4. Permission of the operating system

Finally, you may need configure permission from users to \$WFM folders.

There are two different sort of user. The **developers**, who will be entrusted of developing the system, and the final users, who will use the system already developed.

It is available that the final users only have execute permission and read permission on the **Workflow Magic** folder in the application server.

The developers, should have the same permission that the final users and write permission, because they will modify the source code which are in this folder.